

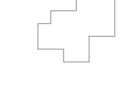


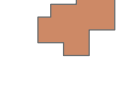



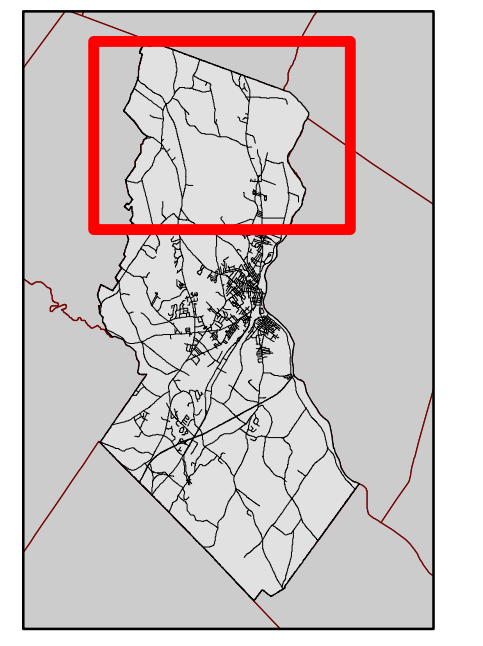
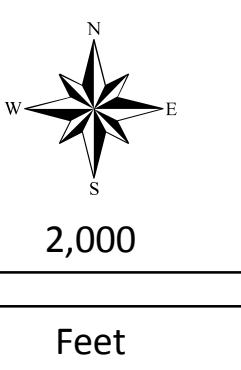
Zoning

-  AG - Agriculture and Resource Protection
-  All Other Zones
-  Tax Parcels

Current Use Taxation

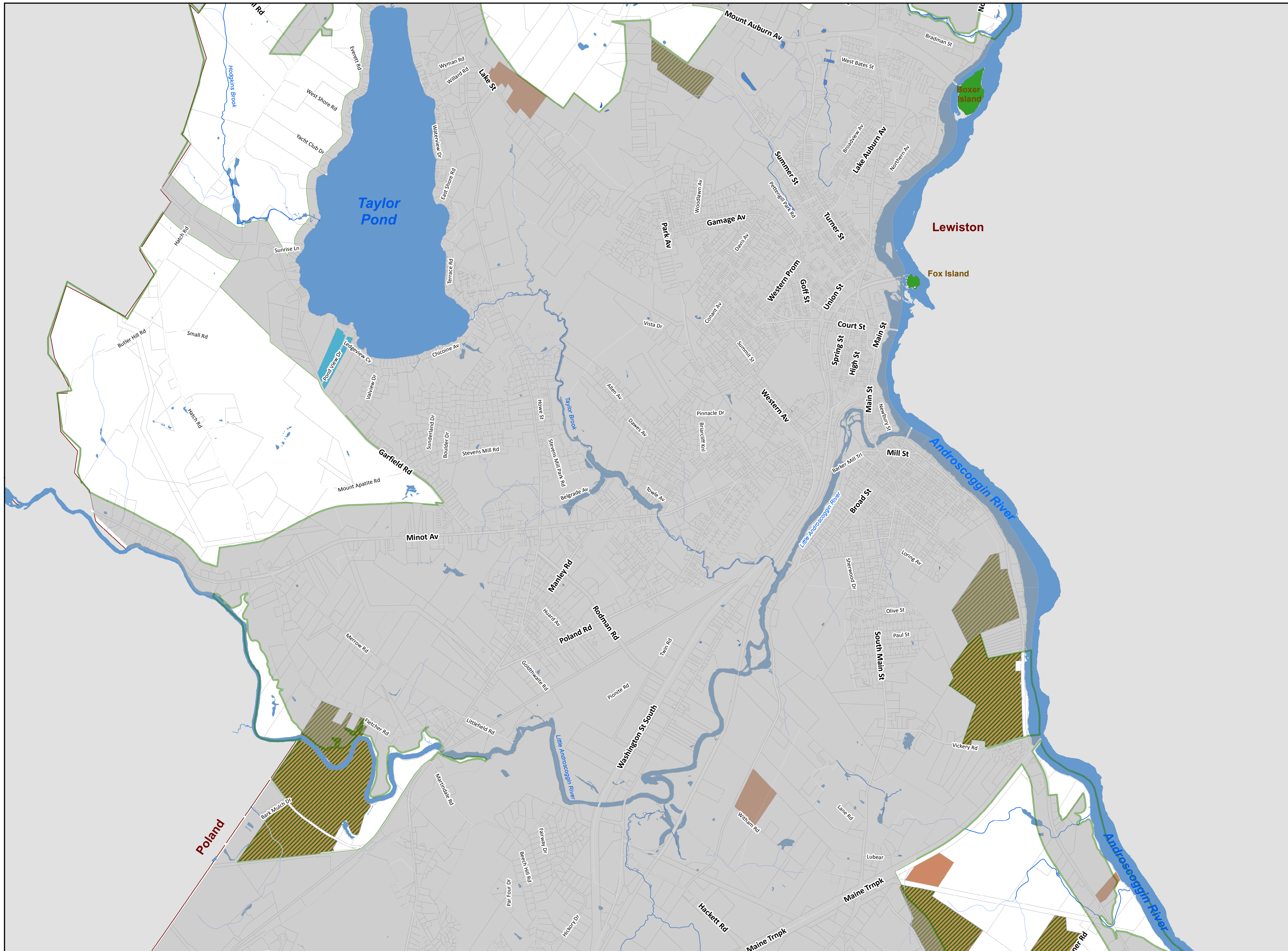
-  Openspace
-  Tree Growth
-  Agriculture
-  Agriculture/Tree Growth

**Current Use Taxation
City of Auburn
North Section**





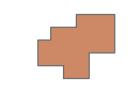




Notes:
 Parcel Data provided by the City of Auburn.
 Soils data from NRCS (<https://websoilsurvey.sc.egov.usda.gov>)

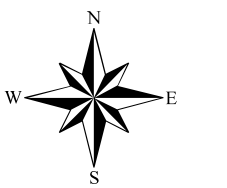
Map printed:
 January 2018



Zoning

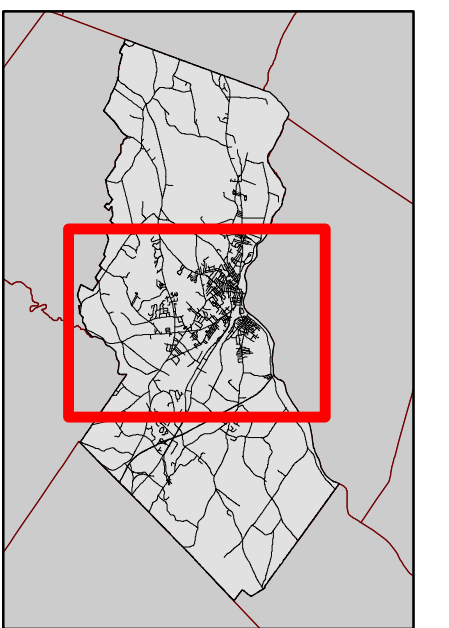
-  AG - Agriculture and Resource Protection
-  All Other Zones
-  Tax Parcels
- Current Use Taxation**
-  Openspace
-  Tree Growth
-  Agriculture
-  Agriculture/Tree Growth

**Current Use Taxation
City of Auburn
Central Section**



2,000

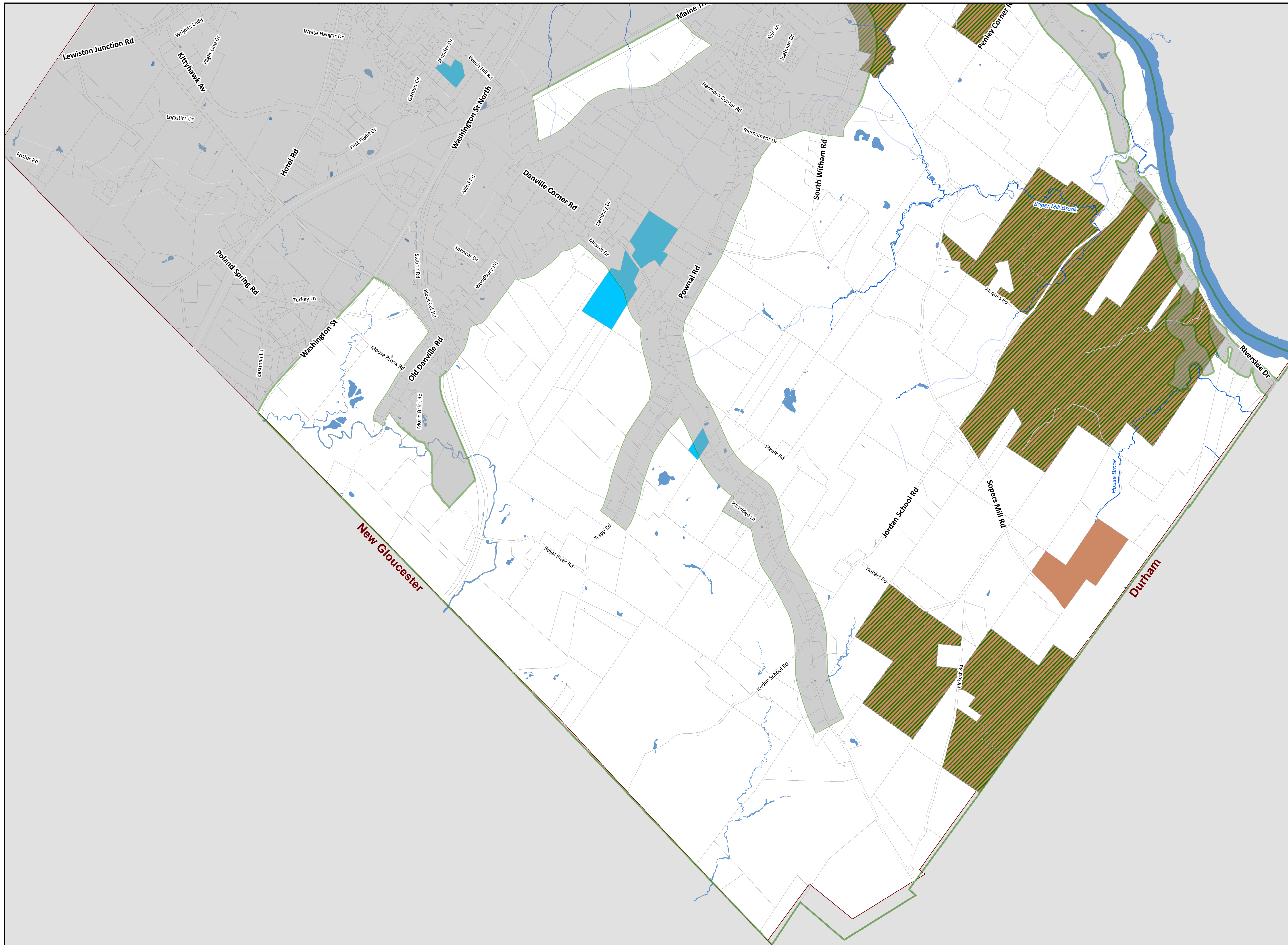
Feet







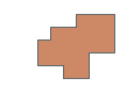


Notes:
Parcel Data provided by the City of Auburn.
Soils data from NRCS (<https://websoilsurvey.sc.egov.usda.gov>)

Map printed:
January 2018

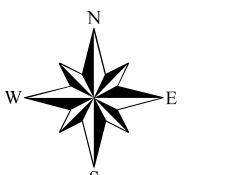
Map Prepared by:
Spatial Alternatives
207.846.2355
www.spatialalternatives.com



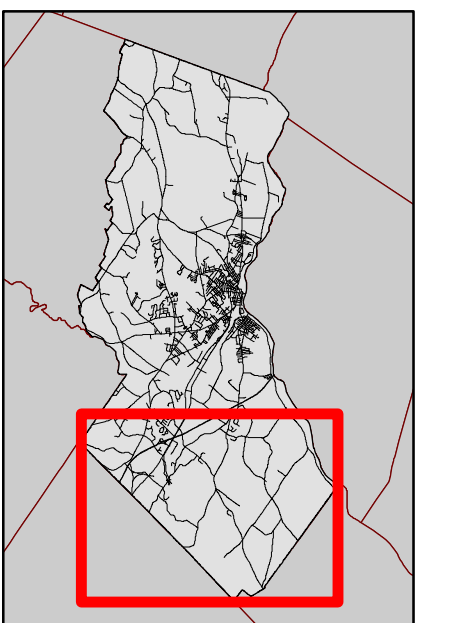
Zoning

-  AG - Agriculture and Resource Protection
-  All Other Zones
-  Tax Parcels
- Current Use Taxation**
-  Openspace
-  Tree Growth
-  Agriculture
-  Agriculture/Tree Growth

**Current Use Taxation
City of Auburn
South Section**



2,000
Feet



Notes:
Parcel Data provided by the City of Auburn.
Soils data from NRCS (<https://websoilsurvey.sc.egov.usda.gov>)

Map printed:
January 2018